

General Notes

THESE DRAWINGS ARE THE PROPERTY OF  
CRD CONSTRUCTION LTD. AND ARE NOT TO  
BE COPIED OR REPRODUCED BY ANY METHOD  
WITHOUT THE WRITTEN PERMISSION OF  
CRD CONSTRUCTION LTD.

PROPOSED  
FINISHED  
FLOOR  
323.80

1  
DENOTES REVISION PER BUILDING  
DEPARTMENTS COMMENTS ON  
PREVIOUS SUBMISSION  
APRIL 3 2025

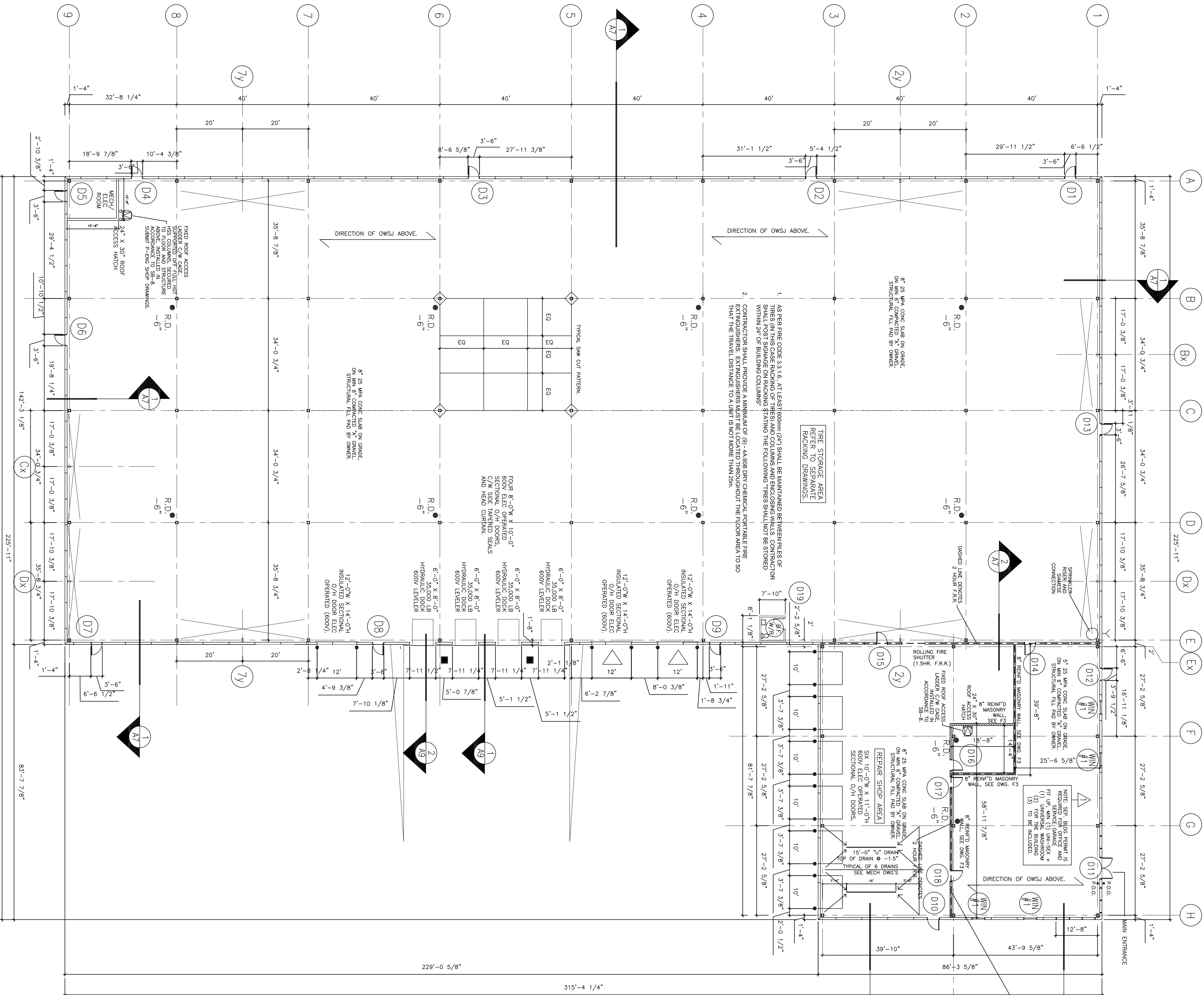
3.	Issued For Construction	01 Mar 2025
2.	Issued For Permit	26 Nov 2024
1.	Issued For Tender	11 Feb 2021
No.	Revision/Issue	Date

Woodland Properties  
(Guelph) Ltd.

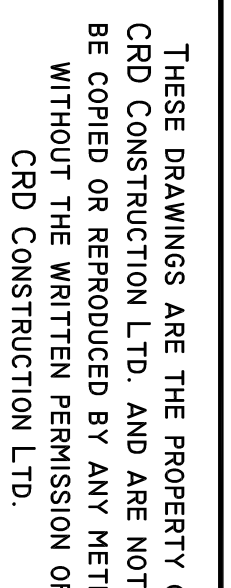
NEW INDUSTRIAL  
BUILDING  
5070R WHITELAW ROAD  
GUELPH, ONTARIO

FLOOR PLAN

Dim. By	Sheet
Date JAN 18 2021	A2
Scale 1/16" = 1'-0"	



FULL HEIGHT INTERIOR BLOCK WALL PARTITION (W-1),  
O.C. (GROUT REINFORCED CORES SHALL BE 3x LADDER,  
O.D. TYPE REINFORCING BARS) AND BLOCK COURSE.



THESE DRAWINGS ARE THE PROPERTY OF  
CRD CONSTRUCTION LTD. AND ARE NOT  
BE COPIED OR REPRODUCED BY ANY MEANS  
WITHOUT THE WRITTEN PERMISSION OF  
CRD CONSTRUCTION LTD.

No.	Revision/Issue	Date
1.	Issued For Tender	11 Feb
2.	Issued For Permit	26 Nov
3.		

**Woodland Properties  
(Guelph) Ltd.**

**NEW INDUSTRIAL  
BUILDING**  
5070R WHITELAW ROAD  
GUELPH, ONTARIO

PROPOSED  
OFFICE PLAN

Drn. By	Sheet
Date MAR 24, 2025	<b>A2.</b>
Scale 1/4" = 1'-0"	

